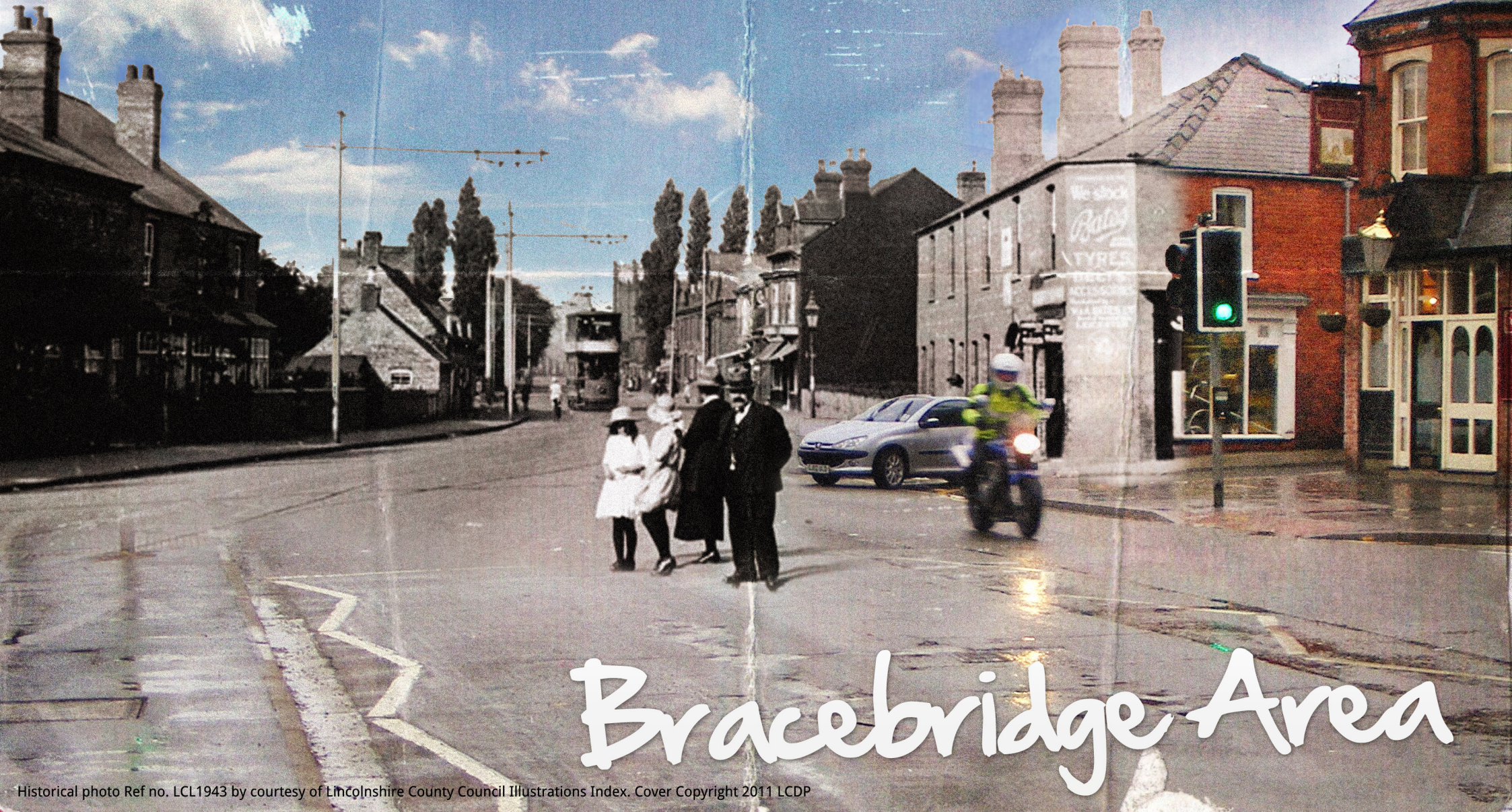


Placecheck Report 2011



Bracebridge Area



Bracebridge Area Placecheck

A record of what we like and dislike about our own neighbourhood with ideas for making it a better place.



Bracebridge Placecheck 2011

Introduction



In October 2010, residents of Bracebridge began to plan and carry out the very first Placecheck of their neighbourhood, with support from the Neighbourhood Team and funding by Awards for All. The area chosen for this Placecheck covers the Bracebridge area of Park Ward which includes the Manse estate and runs from Newark Road junction with Brant Road through to St Catherine's and the side streets along the way on both sides of Newark Road.

Placecheck is a tool to use within the community to find out what people think about the place where they live, work and play. It focuses on people, place and movement and asks local people to identify what is good in an area, what is not so good and how it can be improved.

The first task was to decide how to divide up the Placecheck area into manageable sections - these we will refer to as zones - 10 zones were identified by the steering group. Residents then completed walkabouts of each area, interviewing local people they met along the way. Two weeks later (and several stops at the local café), the residents had completed all 10 zones and taken over 600 photographs. The Neighbourhood Team then began the task of pulling together all the information, identifying key concerns and starting discussions with agencies working in the area as to how we could use the findings in this report to benefit the community of Bracebridge.

70 children and young people from Bracebridge Infant and Nursery School, Manor Leas Junior School, The Priory LSST School and the Friday Night Youth Group also took part in Placecheck and have contributed their views to this report.

Bracebridge Placecheck Zones 2011



Zone 1 – Manse Ave, Apple Garth, Cedar Ave, Parker Ave, Parker Crescent, footpath to rear of Cedar Ave.

Zone 2 - Holly St, Holly Close, Laurel Close, Fountain Court (including Gatehouse on corner).

Zone 3 – Newark Rd from Brant Rd to Community Centre, Beech St, Beech Court, Poplar St, Elder St, Maple St.

Zone 4 – Victoria St (including side streets), Ellison St, Francis St, Ewart St, Urban St, Sections of Newark Rd between these streets.

Zone 5 – Clayton Rd, Murdock Rd, sections of Newark Rd between these streets and up to car showroom.

Zone 6 – Frank Swaby Court, Shamrock Cottages, Milton St, Clumber St, Newark Rd from car showroom to last terrace house.

Zone 7 – Otter's Cottages, Stanley St, Saville St, Boundary St, Newark Rd between 73 (chemist) and 157.

Zone 8 – Russell St, Manby St, Fairfax St, Willow Tree Close, Park Lane, Newark Rd between 157 and 231.

Zone 9 – Walkers crisp factory and car rental site.

Zone 10 – Fishers Cottages, Lexington House, Newark Rd from 267 to 339.

Acknowledgements

The Neighbourhood Team would like to thank the following individuals and organisations for their help, support and guidance during the planning stages, at the walkabouts and in the creation of this report. Placecheck is about what you like and dislike about your community but more importantly how it can be improved to make it a better place to live, work and play. We hope that this has been reflected within this report and that it will provide you with an action plan to guide future development in your area with the aim of creating a shared vision and a clear strategy to improve your area. A big thank you to:

Residents: Dave Scott, Melissa Snyder, Helen Rose, Ian Davey and Joan Smith.

Children and Young People : Riley Aldrich, Ben Browne, Bethany Beesley, Phoebe Bloomfield, Maddison Davies, Ryan Lane, Shreekes Nimavet, Tabinda Rabbani, Georgia Carr, Chloe Choi, Pallabhi Mandel, George Baker, James Taylor-Foster, Cameron Chambers, Tessa Durrance, Lyndsey Bridge, Carl Clinkscales, Charlie Kennedy, Zoey Browne, Harvey Jack, Shawna Bellamy and Katie Johnson.

Agencies : Anthony Angus, Simon Colburn, Caroline Pritchard, Tony Garner, John Morris and Suzanne King from City of Lincoln Council, Holly Smith and Stan Wall from Lincolnshire County Council and Ps Carrie Diamond from South Neighbourhood Policing Area for their contribution to the agency feedback section.

Bridgette Fisher from Lincolnshire County Council Detached Youth Team, Suzanne Parker and Marie Denham from Bracebridge Infant and Nursery School, Kayleigh Langley and James Greenwood from Manor Leas Junior School, Simon Evans and Helen Trimble from The Priory Academy LSST, Kyle Watts PCSO from Bracebridge Lowfields Neighbourhood Policing Team and Joel Dowse from City of Lincoln Council for their input and support during the children and young persons walkabouts.

Adam Partington from Lincoln City Council Heritage Connect Team for his assistance with the Brief History of Bracebridge Section.

Councillors Neville Jackson, Brent Charlesworth and David Jackson for their support and input throughout the project.

LCDP (Lincoln Community Development Project) for their guidance throughout the project and design of the front cover.

Report page by page

Pages 6 - 7 A Brief History of Bracebridge

Zone 1 - Page 8 — Manse Ave, Apple Garth, Cedar Ave, Parker Ave, Parker Crescent, footpath to rear of Cedar Ave.

Zone 2 - Page 9 - Holly St, Holly Close, Laurel Close, Fountain Court (including Gatehouse on corner.

Zone 3 - Page 10- 11 — Newark Rd from Brant Rd to Community Centre, Beech St, Beech Court, Poplar St, Elder St, Maple St.

Zone 4 - Page 12 - 13 — Victoria St (including side streets), Ellison St, Francis St, Ewart St, Urban St, Sections of Newark Rd between these streets.

Zone 5 - Page 14 — Clayton Rd, Murdock Rd, sections of Newark Rd between these streets and up to car showroom.

Zone 6 - Page 15 — Frank Swaby Court, Shamrock Cottages, Milton St, Clumber St, Newark Rd from car showroom to last terrace house.

Zone 7 - Page 16 - 17 — Otter's Cottages, Stanley St, Saville St, Boundary St, Newark Rd between 73 (chemist) and 157.

Zone 8 - Page 18 — Russell St, Manby St, Fairfax St, Willow Tree Close, Park Lane, Newark Rd between 157 and 231.

Zone 9 - Page 19 — Walkers crisp factory and car rental site.

Zone 10 - Page 20 — Fishers Cottages, Lexington House, Newark Rd from 267 to 33

Page 21 - 24 Children and Young Person's Walkabouts

Pages 25 – 34 Placecheck Recommendations

A Brief History of Bracebridge

Bracebridge lies to the south of Lincoln, at the bridging point of Newark Road and the River Witham. The area was once the location of an outlying village within the Parish of Bracebridge.

A few elements of this village survive, including the 11th century All Saints Church, the Late Victorian/Edwardian Brantley Manor and Grosvenor Hall, and elements of parkland associated with the latter. However, much of the original village and its surrounds have been overwritten by a series of residential developments constructed as Lincoln expanded south during the mid to latter part of the 20th century.

Newark Road runs through the centre of Bracebridge and follows the line of the Fosseway, a Roman road that provided the main southerly access route into the Roman city of 'Lindum'. The road runs broadly parallel to the River Witham and it is likely that the village of Bracebridge developed around, and took its name from, the crossing point of the River Witham. The position of the current bridge is likely to have been established during the High Medieval Era [850-1350 AD], if not earlier.

Grosvenor Hall, originally named Bracebridge Hall, was built during the Late Victorian/Edwardian Period [1869-1919] on the site of an earlier house. The hall and its grounds occupied most of the site of the medieval village of Bracebridge. The park was bounded by the Lincoln and Honington Branch Railway on the east, Maple Street to the north, and Manse Avenue to the south. To the west, the parkland originally included Brant Road extending to the river, but when the road was improved, the park was divided in two. It is likely that several large mature trees, such as that in front of Numbers One to Three Laurel Close, were originally planted as part of the informal parkland around the hall. The highly ornamental lodge to Bracebridge Hall on the corner of Brant Road and Newark Road also still survives.

Land around the village of Bracebridge was divided into fields in a piecemeal fashion, by a series of private treaties during the Early Industrial Period [1750-1845]. Areas of former common pasture by the river became fields associated with farms based on the upper escarpment slope outside the city boundary. The field ditches and hedges are likely to have been established at this time, some of the alignments of which survive in the current townscape (e.g. Urban Street and the rear plot boundaries of numbers 19-89 Maple Street). It is likely that much of the land around Bracebridge remained as open farmland until the Late Victorian/Edwardian Periods.

The Lincoln and Honington Branch Railway, which forms the eastern boundary of Bracebridge, opened in 1867 and operated until 1965. The arrival of the railways in Lincoln during the mid part of the 19th century led to a period of prosperity and rapid expansion, including the construction of the Late Victorian/Edwardian terraced houses off Newark Road. These were built to house the growing number of working class families, employed by Lincoln's many manufacturing industries. Beech Street and Elder Street survive as some of the last roads to be built during the Industrial period (c.1918). Open land either side of the new housing may have been used by the resident communities.

Between 1882 and 1929, a tram service also ran along Newark Road from the surviving depot at 150 Newark Road up High Street to St. Benedict's Square. Gas works were built adjacent to Newark Road on the modern site of Clayton Road Industrial Estate, and continued in operation until 1972.

Much of the housing in the south of Bracebridge and Manse estate dates to the Inter-War Period and consists of either terraced housing, or a mixture of short rows of four houses and semi-detached houses. During this period, much of the remaining open land within and around Bracebridge was developed as industry or services.



The current Walkers Snack Foods factory was developed on the site of a former nursery, and engineering works were built on the corner of Milton Street and Clumber Street. In more recent times, there has been development at the western ends of Manby Street and Fairfax Street, the provision of community services, such as Bracebridge Community Centre, the Adult Day centre and Ashley Court care home and expansion of Priory LSST Academy.



If you are interested in finding out more about your neighbourhood, Heritage Connect is an innovative website which helps connect people with the places in which they live and work, and which they visit. The website uses up to the minute technology to provide information to people wherever they are. The website allows people to upload images and add their own views. It has been designed to be used by local residents, visitors, school children and people involved in the planning process – in short anyone who is interested in places, how they developed and how they might change. You can visit Heritage Connect at www.heritageconnectlincoln.com.

Zone 1 - Manse Avenue, Cedar Avenue, Applegarth, Parker Crescent, Parker Avenue

What we like

- ✓ The Church
- ✓ Working phone box
- ✓ Post box
- ✓ Birds
- ✓ Peaceful
- ✓ Fences
- ✓ Close to green spaces
- ✓ Has dog bins
- ✓ Trees
- ✓ Dropped kerbs
- ✓ Garages
- ✓ Well kept gardens
- ✓ Off street parking
- ✓ Place to store bins
- ✓ Sold houses
- ✓ Good PCSO
- ✓ Quiet



What we don't like

- ❖ Boarded up shops
- ❖ Litter
- ❖ Drainage
- ❖ No signage for public footpaths
- ❖ Graffiti
- ❖ Lack of parking
- ❖ No lighting
- ❖ Lack of sign
- ❖ Age to houses
- ❖ Confusing road signs
- ❖ Noisy
- ❖ ASB
- ❖ Damaged Street sign
- ❖ TV aerials
- ❖ Having to park on pavement



What would make it better?

- More litter bins
- Better signage
- Pavement where footpath runs out
- Community Garden
- Replace boarded up shops with housing
- Improve parking
- New street signs
- Deal with drug problem & ASB
- Improve policing resources
- Benches

Zone 2 - Holly Street, Holly Close, Laurel Close, Fountain Court

What we like



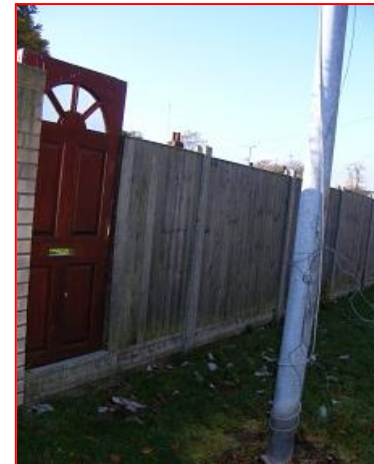
- ✓ Clean and tidy street
- ✓ Nice gardens
- ✓ Quiet
- ✓ Good Neighbours
- ✓ Traffic crossing on two junctions - safe for children
- ✓ Tidy area
- ✓ Resident parking
- ✓ Good appearance



What we don't like



- ❖ Litter
- ❖ Broken Kerbs
- ❖ Overgrown nettles
- ❖ Some untidy gardens
- ❖ Man holes
- ❖ Disused buildings
- ❖ Graffiti
- ❖ Street sign worn
- ❖ Pot holes
- ❖ Had issues with youth ASB
- ❖ Dog fouling
- ❖ No pedestrian crossing
- ❖ Wheelie bins
- ❖ Over grown grass areas
- ❖ Old door being used as a gate
- ❖ Broken wall
- ❖ Lots of leaves
- ❖ Overhanging of branches
- ❖ Street lighting not very efficient



What would make it better?

- Fix kerbs
- Community Garden
- Block paving on grass verges
- Use empty building as a community venue
- More activities for younger people
- Get residents to keep gardens tidy
- Clear up broken wall
- Garages could be maintained
- More dog fouling & litter bins
- Cutting back branches
- Have street light turned other way
- Regular litter picks
- Extra crossing on 3rd Junction



Zone 3 – Newark Road, Brant Road, Community Centre, Beech Street, Beech Court, Poplar Street, Elder Street, Maple Street

What we like

- ✓ Bus lay by
- ✓ Features on new housing
- ✓ Security camera at community centre
- ✓ Access to car park for residents
- ✓ Views to hills
- ✓ Quiet streets
- ✓ Families stay in the area
- ✓ Lots of different character in property
- ✓ Dustbin and lamppost
- ✓ Turning circle to help traffic flow
- ✓ Footpath at top of street connects estate
- ✓ Gardens well presented
- ✓ Rear aspect of nursing home
- ✓ Trees, hedges, shrubs
- ✓ Local Store



What we don't like

- ❖ Lots of traffic
- ❖ No timetable for buses
- ❖ Broken bike shelter
- ❖ Blocked drains/ gullies
- ❖ Broken wall
- ❖ Dog fouling
- ❖ Public footpath sign misleading
- ❖ Poor street lighting
- ❖ Metal fence railings
- ❖ Concrete post sticking up from floor
- ❖ Graffiti
- ❖ Fencepost smashed
- ❖ Damaged fencing



Zone 3 – Newark Road, Brant Road, Community Centre, Beech Street, Beech Court, Poplar Street, Elder Street, Maple Street (continued...)

What we like

- ✓ Spinney behind centre
- ✓ Good lighting
- ✓ Gated access safe for residents
- ✓ Bin near pub
- ✓ Height restriction for car park
- ✓ Fences at end of street
- ✓ Detailed brickwork
- ✓ Properties well maintained
- ✓ Sound of wind chime



What we don't like

- ❖ Broken footpaths
- ❖ Cracked paving
- ❖ No lighting
- ❖ Tarmac uneven on footpaths
- ❖ Overhanging branches
- ❖ Cut from rest of estates
- ❖ No features in new house design
- ❖ Holes in road
- ❖ Broken window
- ❖ Tarmac over blocked sewer drain
- ❖ Barbed wire on properties
- ❖ Sign missing
- ❖ No trees in street
- ❖ Bins left out



What would make it better?

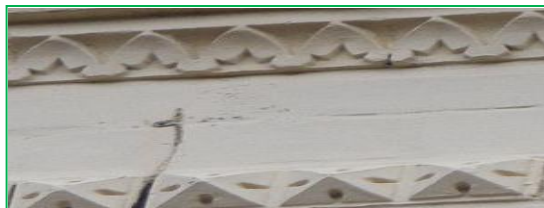
- Clean up glass
- Cut back trees
- More street lights
- Repair footpaths and kerbs
- Tidy up end of street – not sure who owns the piece of land
- Changes to bus stop/ bike shelter



Zone 4 – Victoria Street, Connaught Terrace, Albany Street, Ellison Street, Francis Street, Ewart Street, Urban Street, Newark Road

What we like

- ✓ Shape of wall
- ✓ Chimneys/chimney pots
- ✓ Weather vane on public house
- ✓ Round wall – old outside toilet for public house
- ✓ Gate to house on corner
- ✓ Tidy gardens
- ✓ Details to houses – changes through history
- ✓ Private, tucked away, quiet street
- ✓ Have parking to rear of properties
- ✓ Access to public footpaths for walking
- ✓ Quiet – peaceful, birds



What we don't like

- ❖ Limited parking
- ❖ Broken walls/fences
- ❖ Wheelie bins on paths
- ❖ Graffiti on park and walls
- ❖ The views to hills have gone
- ❖ Dead ivy on houses
- ❖ Garden totally covered in branches
- ❖ No space for wheelie bins
- ❖ No greenery
- ❖ Footpath uneven often floods
- ❖ Weapon shop – frightening
- ❖ Wall missing to front of shops – cars hang over path
- ❖ Community feeling has gone
- ❖ Pylon at end of street



What would make it better?

- Remove graffiti
- More seats on park
- Repair equipment
- Painting walls
- Get rid of weeds
- Plant new flowers/trees
- Re-tarmac paths
- Lighting
- Sort out gardens
- Sort out bars to stop children from playing on them
- Sort out footpaths
- Enforce resident parking
- More checks on park at night because of drinking



Zone 4 – Victoria Street, Connaught Terrace, Albany Street, Ellison Street, Francis Street, Ewart Street, Urban Street, Newark Road (continued...)



What we like

- ✓ Dog bin and waste bins
- ✓ Cafe on corner
- ✓ Quiet street
- ✓ Tesco development new to area – convenient, choice, local jobs
- ✓ Variety of shops
- ✓ ATM now in area free of charge to use
- ✓ Has industrial area – suits business
- ✓ Regular bus route
- ✓ Corner shop
- ✓ Room to park cars
- ✓ New park on doorstep – kids kept out of trouble
- ✓ School – sound of children playing
- ✓ Place/access to walk dog
- ✓ Trees in street
- ✓ Bridge improvement
- ✓ Original sash windows
- ✓ Boxing club for children



What we don't like

- ❖ Wires hanging out of houses
- ❖ Bus shelter missing
- ❖ Noise of sirens
- ❖ Flower bed used as rubbish bin
- ❖ Rubble blocking access to footpaths needs removing
- ❖ Kids playing on fence bars at night
- ❖ Tesco – impacting on environment with additional traffic
- ❖ Park attracts teenagers – drinking
- ❖ Resident only parking – not enforced
- ❖ Dog fouling
- ❖ Broken telephone exchange boxes
- ❖ Holes in road and uneven paths
- ❖ Half residential/half industrial
- ❖ Limited lighting
- ❖ Rubbish on floor
- ❖ Fence and wall broken
- ❖ Rubbish dumped behind shops
- ❖ Litter, overflowing bins



What would make it better?

- Police on beat not PCSOs
- Reduce number of sirens
- Replace bus shelter
- Replant flower bed
- Mend footpath to stop flooding
- Replace old street signs
- Tidy up rubbish
- Remove ivy
- People clean up after there dogs
- More bins on streets – student way to school
- Road to be repaired



ZONE 5 – Urban Street, Clayton Road, Murdock Road, Newark Road

What we don't like

- ❖ Rubbish behind fences
- ❖ Litter
- ❖ Overgrown bushes



What we like

- ✓ Greenery
- ✓ View to Cathedral
- ✓ Clean maintained road
- ✓ Car sales room is tidy and well presented
- ✓ Clean well kept business



What would make it better?

- Litter pick
- Sign for industrial area



ZONE 6 – Frank Swaby Court, Shamrock Cottages, Milton Street, Clumber Street, Newark Road

What we like

- ✓ Bus stop
- ✓ Quiet
- ✓ Clean and tidy
- ✓ Greenery - trees left by developers



What we don't like

- ❖ Cracked kerbs
- ❖ Cars parked on paths
- ❖ Paths uneven
- ❖ Crumbling walls
- ❖ Rubbish dumped
- ❖ Graffiti
- ❖ Wheelie bins on paths
- ❖ Only 1 lamppost
- ❖ Footpath - runs out



What would make it better?

- Repair kerbs and paths
- Litter pick
- Remove wheelie bins
- Remove graffiti
- Clear up rubbish



Zone 7 – Otter's Cottages, Saville St, Boundary St, Stanley St, Newark Rd

What we like

- ✓ Tucked away
- ✓ Historic cottages
- ✓ Well maintained gardens
- ✓ Greenery
- ✓ Double yellows keep cars to one side of the road
- ✓ New railings



What we don't like

- ❖ Dumped rubbish
- ❖ Broken fences
- ❖ Empty shops
- ❖ Dustbins kept in front gardens
- ❖ Graffiti
- ❖ Rubbish bins on footpath
- ❖ Dumped cars on a piece of land
- ❖ Bollard broken



Zone 7 – Otter's Cottages, Saville St, Boundary St, Stanley St, Newark Rd (continued...)

What we like

- ✓ Door knockers
- ✓ Flats have allocated parking
- ✓ No cars parked on foot paths
- ✓ No through road
- ✓ Rubbish bin at bus stop
- ✓ Pedestrian crossing
- ✓ Local shops
- ✓ Old pub sign still on building



What we don't like

- ❖ Run down house
- ❖ Parking on footpaths
- ❖ Icy footpaths hazard in poor weather
- ❖ Wheelie bins on road
- ❖ Pot holes
- ❖ Uneven foot paths
- ❖ Bins left out for days
- ❖ Walls crumbling
- ❖ Rubbish on footpaths
- ❖ Puddles on uneven paths
- ❖ Lorries parking on paths
- ❖ Properties not maintained



What would make it better?

- Remove graffiti
- Move bins
- Repair bollard
- Tidy up house
- Keep footpaths clear in winter
- Mend potholes
- Repair fences
- Repair footpaths



Zone 8 – Russell St, Manby St, Fairfax St, Willow Tree Close, Park Lane, Newark Rd

What we like

- ✓ Willow tree at bottom of street
- ✓ Neighbourhood watch sign
- ✓ Litter bin
- ✓ New housing have dedicated car parks – 80 for 105 dwellings
- ✓ Peaceful
- ✓ Places to park
- ✓ Views to river
- ✓ Green area to back of buildings
- ✓ Detail to brickwork
- ✓ Streets wider
- ✓ Gate to new flats
- ✓ Post box/rubbish bin near bus stop
- ✓ Old sign to park
- ✓ Access to park
- ✓ Dog bins x 2
- ✓ Stone detail to houses



What would make it better?

- Mend wall
- Replant flower beds
- Plant trees for views
- Clean up litter
- Replace bins
- Bins to be taken in
- Turn bin to face footpath
- Repair footpaths where it floods
- Tidy up old sign – history
- Repair broken paving



What we don't like

- ❖ Cars park half on footpaths
- ❖ Dumped supermarket trolley
- ❖ View of factory from houses
- ❖ Broken wall on corner
- ❖ Rubbish on floor near houses and broken dust bin lids
- ❖ Flower beds empty
- ❖ Bins on footpaths
- ❖ Rubbish in corner of street
- ❖ Kerbs broken
- ❖ Wires to front of property hanging out
- ❖ Uneven footpaths
- ❖ Rubbish behind fences – mainly beer cans and bottles



What we like

- ✓ Trees to front of building & shrubs
- ✓ Ironmongery around trees
- ✓ Original detail on original building
- ✓ Open space
- ✓ Easy access for forecourt



What we don't like

- ❖ Lorries
- ❖ Smell from factory
- ❖ Puddles



What would make it better?



- Rear of factory – trees to be planted to cover up the lorries parked at the rear
- Greenery to showroom to soften area

Zone 10 – Newark Rd, Lexington House, Bracebridge Library

What we like

- ✓ Old Space
- ✓ Variety of houses
- ✓ Dustbin
- ✓ Post box
- ✓ New housing development
- ✓ Bus stop – in good position, big and has an electronic sign
- ✓ Green Space & trees



What we don't like

- ❖ Drains
- ❖ Overhanging trees & shrubs
- ❖ Constant Noise from traffic
- ❖ Puddles & slippery leaves on footpath
- ❖ Road collapsed
- ❖ Areas unused – trees/woods
- ❖ Run-down property
- ❖ Bottles / Rubbish
- ❖ Limited Parking
- ❖ Bus stop reduces space of footpath
- ❖ Piece of land at rear of library not used



What would make it better?



- Turn bin near the old post office round to face the footpath
- Clear the footpath of slippery leaves
- Clear out the drains to prevent people being splashed by puddles on roadside
- Mend the uneven areas of footpaths to reduce puddles
- Make library better – extension
- Library needs better profile in the community
- Bike shelter at the library
- Use the spare piece of land for car parking

Children and Young Persons Walkabouts

The Neighbourhood Team worked with several groups of children and young people to find out their likes and dislikes about their neighbourhood where they attend school, live and play. There is one school directly in the Placecheck area and two other schools nearby, who provide education for the children and young people of Bracebridge.

In total 22 children and young people from Bracebridge Infant and Nursery School, Manor Leas Junior School, The Priory Academy LSST and the Friday Night Youth Group took part in Placecheck walkabouts. The walkabouts took place over a number of days and even on one evening and the children and young people worked with staff from their schools, local residents, members of Friends of Bracebridge Infants School, Detached Youth Team, Neighbourhood Policing Team and City of Lincoln Council Anti Social Behaviour Team and took 117 photographs to record their likes and dislikes.

In addition to those who took part in the walkabouts another 48 children from Bracebridge Infant and Nursery School have contributed their views to this report and took part in a school based exercise using a locality map of Bracebridge to highlight their likes and dislikes with sticky dots.



What we like!

Likes

- ✓ The view
- ✓ The Shops
- ✓ The Library
- ✓ Numbers on houses the postman can see them
- ✓ The park
- ✓ The clock in the café
- ✓ The old lamp
- ✓ Pet shop
- ✓ Bins being off the footpaths
- ✓ Birds in the trees
- ✓ The front of the nursing home
- ✓ The community centre
- ✓ The corner shop
- ✓ The Cenotaph
- ✓ Dog waste bin
- ✓ Shapes of old walls
- ✓ Chimney pots
- ✓ Tidy gardens
- ✓ Detail on houses - shows history
- ✓ Tesco - really friendly



What we don't like!

Dislikes

- ❖ Broken fences and walls
- ❖ Cars parked on footpaths
- ❖ Rubbish and litter of the floor
- ❖ Broken sign at garage
- ❖ The rusty fence
- ❖ The broken footpath
- ❖ Graffiti
- ❖ Weeds
- ❖ Dog poo
- ❖ The park matting coming off
- ❖ Rubbish on the park
- ❖ Boarded up house
- ❖ We don't like the roadwork's
- ❖ We don't like the gun shop
- ❖ Mud on the road from builders
- ❖ The very dirty road signs
- ❖ Fencing around the park
- ❖ Spider web on park – it's too high
- ❖ Can't get the minibus into the car park since new barrier was put in
- ❖ Car blocking the park gate
- ❖ Holes in the road
- ❖ Traffic
- ❖ Moss and chewing gum on the wall
- ❖ Wires sticking out
- ❖ Smashed windows
- ❖ Wheelie bins on the footpaths
- ❖ Broken green telephone boxes
- ❖ No crossing on junction
- ❖ Broken bollards
- ❖ Barbed wire & spikes on building
- ❖ Cigarettes and broken glass on floor
- ❖ No place to put wheelie bins
- ❖ Dead Ivy on walls/houses
- ❖ Paths uneven near park
- ❖ Fence surrounding the building site
- ❖ Broken zip wire
- ❖ No lighting at the park – feels unsafe
- ❖ Nothing to do at the community centre
- ❖ Recent incidents with adults make the area unsafe



We Think This Would Make It Better!

Clean up all the graffiti!



We want more books for junior age children!



Don't park in front of gate. We want to get into the park!



Please fix the damaged play equipment!



These could be dangerous. We want to be safe in our area!



Clean up after yourselves and your dogs!



Placecheck Recommendations

Identified Need	Feedback from Walkabouts	Partnership Response
<p><u>Litter on streets</u> (Zones 1; 2; 3; 5; 6; 8; 10)</p>	<p>Many of the existing bins could be better positioned for greater ease of usage (including some dog fouling bins). One example is the bin at the bus stop in zone 8 where you need to step into Newark Road to access it properly. Another is the bin at the old Post Office (Zone 10). Additional litter bins should be provided in areas shown to have particular problem.</p> <p>Explore opportunities for litter-picks in problem areas.</p> <p>Businesses should be encouraged to remove litter from outside their premises to make the area more aesthetically pleasing.</p> <p>Replant flowerbed to corner of Francis Street to discourage littering and provide a bin as an alternative.</p> <p>Explore with Public House opportunities for addressing the broken glass on footpath/road which is a key route for school children.</p>	<p>The City of Lincoln Council have confirmed that they are happy to consider suggestions for new bins or the movement of bins. Where possible they would rather ensure the best use of existing stock but would be pleased to consider suggestions for bin swaps or moving bins etc and, where there is no other option, the provision of new bins. Residents can contact City of Lincoln Council Customer Services on Lincoln 01522 873423 to register their request.</p> <p>The Community Caretaker will take the lead in exploring options around this. A possible fund has been identified to support this.</p> <p>Litter build-ups should be reported to City of Lincoln Council Customer Services on Lincoln 01522 873423. Where problems with litter are persistent, the City of Lincoln Council are able to serve 'Street Litter Control Notices'. Residents should contact the Community Caretaker in the Neighbourhood Team if they are aware of a persistent litter issue.</p>

Identified Need	Feedback from Walkabouts	Partnership Response
<p><u>Community Cohesion</u> (Bringing communities together)</p>	<p>Trial interagency street surgeries in areas of concern to address issues such as drug problems & ASB.</p> <p>Explore strategies to reduce ASB in regards to both young people and adults – particularly alcohol related issues.</p> <p>Would like a proper footpath on the old railway track linking Manse to Bracebridge.</p> <p>Provide benches on the green space at Applegarth so that residents have opportunities to socialise (Zone 1).</p> <p>Provide additional seating on Victoria Street play area to encourage residents to socialise (Zone 4).</p> <p>Investigate the opportunity for a communal sign and create an area name for industrial site to develop a sense of identity as in line with other areas of the city.</p>	<p>The Neighbourhood Policing Team already conducts Street Surgeries in the locality and there is an option for other agencies to support and attend these surgeries if there was sufficient interest in the community.</p> <p>The Neighbourhood Policing Team are currently engaged in a promoting and delivering crime stoppers cards in the area, to encouraging residents to give us anonymous information about such issues.</p> <p>The City of Lincoln Council will provide an additional bench at the Victoria Street Play area.</p> <p>New sign now in place for some of the industrial units.</p>

Identified Need	Feedback from Walkabouts	Partnership Response
<p><u>Graffiti</u> (Zones 4; 6; 7;)</p>	<p>Some graffiti has been present for long periods (e.g. Zone 4) and residents are keen for this to be removed to improve the look of the local area.</p>	<p>Concerns regarding graffiti should be passed to City of Lincoln Council Customer Services on 01522 873423. If the graffiti is on land owned by City of Lincoln Council then it will be removed within 24 hours (if offensive), if the graffiti is on private land the landowner will be contacted to discuss the removal.</p> <p>The Bracebridge Neighbourhood Board are requested to collate a list of current graffiti 'hotspots' to be considered as part of a 'removal blitz' by City of Lincoln Council.</p> <p>Funding opportunities may be available to fund or part fund a graffiti clean in the locality.</p>
<p><u>Promoting and securing local facilities</u></p>	<p>Raise library profile in the community and encourage use by agencies for outreach work. Encourage residents to register/utilise the service.</p> <p>Better signage for public footpaths especially those leading to the Viking Way. The proximity of the Viking Way could be better promoted to residents with the aim that they will make better use of this facility and improve their health and well-being.</p>	<p>To be explored further by the Bracebridge Neighbourhood Board.</p>

Identified Need	Feedback from Walkabouts	Partnership Response
<p><u>Footpaths</u></p>	<p>Explore opportunities to tackle issue of slippery leaves making pavements hazardous in winter months.</p> <p>Cars parking on pavements have resulted in broken kerbs and pavements. This creates numerous issues, for example water accumulating into large puddles, particularly on school route (Zones 7 & 8). Due to the widespread nature of issue, an audit could be carried out in the area to ascertain the amount and severity of the problems to assist in prioritising repairs and highlight outstanding issues.</p> <p>Remove tree roots that are growing through the footpaths that provide a tripping hazard (Zone 3).</p> <p>Insert a drop kerb where footpath runs out to link to other side of the road on Manse Avenue (Zone 1).</p> <p>Wheelie bins left out on the pavement – City Of Lincoln Council to inform residents of their collection day and their responsibility to remove them from footpaths.</p>	<p>Areas of concern can be reported to City of Lincoln Council Customer Services on 01522 873423 (response is often next day). Cory will carry out leaf removals in the autumn months in problem areas.</p> <p>The Bracebridge Board are requested to collate a list of specific problem locations relating to damaged pavements to be assessed by Lincolnshire County Council Highways department. Repairs to damaged kerbs etc will be prioritised on severity of damage, location, risk to public etc.</p> <p>Lincolnshire County Council Highways department will assess the feasibility of this request.</p> <p>The Community Caretaker to work with residents to collate specific streets and addresses identified as a problem. These are to be passed to City of Lincoln Council Customer Services on 01522 873423 to investigate.</p> <p>‘Warning’ stickers can be placed on the bins and / or letters issued to residents. These will then be followed up by monitoring and further action if required.</p>

Identified Need	Feedback from Walkabouts	Partnership Response
<p><u>Better usage of land</u></p>	<p>Bracebridge has various buildings and green spaces that are vacant or under-utilised.</p> <p>Particular examples are:-</p> <p>Piece of empty land fenced off to the rear of Parker Crescent - green space or a community garden? (Zone 1)</p> <p>Make better use of the green area to flats on Laurel Close (Zone 2) – Potential community garden?</p> <p>Make better use of raised flower beds in area (Zone 8).</p> <p>The green space to side of Lexington House/rear of Newark Road (Zone 10)</p> <p>The spare piece of land to rear of library (Zone 10).</p> <p>Establish the ownership of the boarded up shops and explore ways to reuse them within the community. (Zone 1)</p> <p>Empty building (Zone 2). Has this potential as a community venue?</p>	<p>City of Lincoln Council have confirmed they are happy to assist the Neighbourhood Board in doing land registry searches to ascertain the ownership of pieces of land or buildings if there is sufficient interest in development. We have already established that the land to the rear of Parker Crescent is owned by City of Lincoln Council.</p> <p>Potential funding opportunities are available through a Cory Environmental Trust (CET) grant or Community Payback (CP).</p> <p>The new government policy of Neighbourhood Plans presents new opportunities for residents to have a greater involvement in planning decisions in their area. City of Lincoln Council have applied for Park Ward (including Bracebridge) to be one of the national vanguards (or pilot) for Neighbourhood Development Plans.</p>

Identified Need	Feedback from Walkabouts	Partnership Response
<p><u>Improve local environment</u></p>	<p>Encourage residents to keep gardens tidy by promoting City Of Lincoln Council refuse collection services and garden assistance schemes.</p> <p>Request residents cut back branches that obstruct pathways and promote schemes provided for by City Of Lincoln Council. (Zone 2 & 3)</p> <p>Request to make fence more visible at The Priory LSST extension due to impact on wildlife – birds being killed flying into the fence.</p> <p>Establish ownership of piece of land at the end of Elder Street with a view to tidying up end of street and encourage the owner to replace the fencing to stop residents cutting through.</p> <p>Consult with the residents Connaught Terrace and Albany Terrace regarding a potential project with Priory LSST painting murals on the end walls to brighten area up instead of the dead ivy.</p> <p>Encourage businesses to tidy up fronts of industrial units & other public buildings.</p> <p>Investigate ownership of derelict house in Saville Street and encourage the tidying up of the property.</p>	<p>The Community Caretaker to explore with residents options available to address this concern such as a 'Community Action Campaign' by promoting the free City of Lincoln Councils Bulky Item Collection Service on 514380</p> <p>Concerns of gardens of properties belonging to City of Lincoln Council should be reported to City of Lincoln Council customer services on 01522 873333.</p> <p>City of Lincoln Council will investigate this.</p> <p>Litter build-ups should be reported to City of Lincoln Council Customer Services on Lincoln 873423 who may be able to serve 'Litter Clearance Notices' if the problem is persistent.</p> <p>City of Lincoln Council will investigate this.</p>

Identified Need	Feedback from Walkabouts	Partnership Response
<p><u>Improve local environment</u></p>	<p>Investigate the ownership of the broken walls to corner of Fairfax Street/Park Lane and encourage the owner to repair of the wall and removal of brick rubble.</p> <p>Plant new flowers/trees in green spaces to brighten up these areas.</p> <p>Plant trees to obscure the side and rear view of the factories & parked lorries.</p> <p>Plant shrubs to front of car showroom to soften and brighten up the area.</p> <p>Tidy up or replace old or damaged signs namely: - Sign to Boultham Park on Russell Street; street sign to Francis Street and Cedar Avenue street sign.</p> <p>Investigate possibility of re-instating bus shelter and making repairs to shelter in zone 3.</p> <p>Repair broken wall in Laurel Close.</p> <p>Better monitoring of the maintenance of garages owned by City Council.</p>	<p>The replacement or tidying up of these street nameplates have been ordered or requested for the new financial year by Lincolnshire County Council Highways.</p> <p>Those bus shelters with no advertising panel are the property of City of Lincoln Council all others belong to Adshel. Considerations for new City of Lincoln shelters will be made in the new financial year.</p>

Identified Need	Feedback from Walkabouts	Partnership Response
<p><u>Highways</u></p>	<p>Blocked drains are resulting in large puddles accumulating in road and pedestrians (including those on school route) are being splashed by traffic on Newark Road (Zone 10).</p> <p>There are severe potholes in Stanley Street (Zone 7) Lincolnshire County Council Highways to consider upgrading the slip road on Brant Road/Newark Road junction to make the junction safer for residents, especially school children safe to cross.</p> <p>Consideration to be given to best times for roadworks to occur so as not to add to traffic congestion.</p>	<p>Problem areas are to be reported to Lincolnshire County Council Highways on 01522 782070.</p> <p>The Placecheck steering group are requested to collate a list of specific locations for Lincolnshire County Council Highways to assess.</p> <p>These have been filled temporarily by Lincolnshire County Council Highways.</p> <p>Unfortunately no funds are available for this type of improvement to be considered at the present time.</p>
<p><u>Lighting</u></p>	<p>Improve the lighting in the vicinity of the play area and Flemming House.</p> <p>Improve the street lighting in zone 3 especially in Beech Street.</p> <p>Turn streetlight to correct position in alley way from Newark Road through to Laurel Close. (Zone 2)</p>	<p>Unfortunately Lincolnshire County Council in its capacity as Highway Authority cannot improve street lighting in a play area. Policy permits highway lighting improvements where there is a benefit in the reduction of Crime or Road Safety. At the present time there are no resources available to consider such requests.</p> <p>Lighting defects can be reported to Lincolnshire County Councils call centre on 01522 782070 enabling rectification 5 days after notification. A fault has been logged the light in the alley way listed.</p>

Identified Need	Feedback from Walkabouts	Partnership Response
<p><u>Children & Young People's facilities</u></p>	<p>Explore improvements to play area fencing to prevent dogs accessing this area (e.g. Addition of wire mesh as in place at Newark Road)</p> <p>Promote ways for residents to report problems such as damaged play equipment.</p> <p>Mend the matting to the Victoria Street Play area.</p> <p>Utilise the play area behind Cedar Avenue to provide play for children and young people to play.</p> <p>Explore options for additional provision for children over 8 years.</p> <p>Provide a Sports wall and youth shelter at Victoria Street play area</p> <p>Remove height barrier to Community Centre car park on Fridays so that the Detached Team minibus can access car park to deliver provision.</p> <p>Explore transport links to the Showroom so local young people can make use of this facility.</p>	<p>Dog Fouling eradication seems to be on the wish list for most places. City of Lincoln Council requires residents to report offences to 01522 873249.</p> <p>Concerns regarding damage to play equipment should be reported to City of Lincoln Council Customer Services on 01522 873423.</p> <p>A Sports wall will be installed shortly at Cedar Avenue Play Area.</p> <p>City of Lincoln Council is working on a Play Strategy which will consider current provision, gaps in provision and a plan for the future of play areas.</p> <p>Sports wall will be installed shortly in Victoria Street play area. Unfortunately there are no funds to install a shelter.</p>

Identified Need	Feedback from Walkabouts	Partnership Response
<p><u>Parking Issues</u></p>	<p>The nature of the majority of housing in Bracebridge results in residents and their guests having to park on the side of the street.</p> <p>The walkabouts found numerous examples of cars parking on the footpaths, creating damage to kerbs and pavements and in some cases blocking the footpaths for pedestrians.</p> <p>Some potential options for consideration are:- Creating setbacks for cars using grass verges. (Zones 1& 2)</p> <p>City of Lincoln Council to enforce resident parking at Flemming House. This location had particular problems with cars taking up the entire footpath and residents having to walk in the road. (Zone 4)</p>	<p>Parking offences need to be reported to the Neighbourhood Policing Team on 0300 111 0300, who can address the concern and enforce and issue parking tickets if necessary.</p> <p>Lincolnshire County Council Highways will be concentrating on repairing damage to existing networks occurred from the recent winter weather. No other resources are available to address additional problems at the present time.</p> <p>City of Lincoln Council do not have any enforcement powers to remove non resident vehicles in Fleming House parking area. 'Warning' stickers can be put on cars but unfortunately action cannot be enforced.</p>

Bracebridge Area Placecheck Report 2011

